



How To Specify

PROTECTION OF NON-PRESSURE OUTDOOR DRAIN LINES FROM ROOT INTRUSION

655 E. Ball Rd. • Anaheim, CA 92805 • Tel: (714) 507-3300 • Fax: (714) 507-3310
www.TChristy.com • 800-BLU-GLUE • Distribution Centers in Anaheim, Sacramento, and Nashville

SPECIFICATION FOR PROTECTION OF NON-PRESSURE OUTDOOR DRAIN LINES FROM ROOT INTRUSION

500.01 DESCRIPTION

The contractor shall seal all plastic-to-plastic mechanical joints of the outdoor landscape drainage system with a root-inhibiting adhesive sealant. This includes all press or push-fit connections of pipe-to-pipe, pipe-to-fitting and pipe-to-basin or collector.

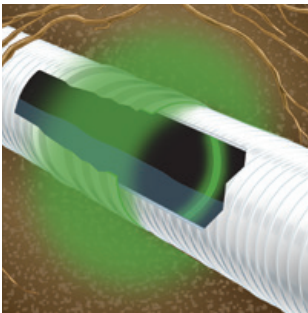
500.02 PROCEDURE AND METHOD

Adhesive sealant should be applied on all connections where pipe nominal plastic pipe sizes 3", 4" or 6" are employed.

Sealing surfaces on pipe and fittings shall be prepared prior to application of adhesive sealant for a formation of a good bond. This includes cutting the pipe squarely and removing any external debris that could interfere with a good fit.

The contractor shall follow the manufacturer-recommended procedure for formation of a sealed joint: The adhesive sealant should be applied first to the socket of the fitting or basin, coating the entire joining surface liberally. Then adhesive sealant should be liberally applied to the end of the pipe, to the depth of the socket, paying attention to coat ridges or grooves on the pipe thoroughly. Once the joint is pushed together, it should be inspected for formation of a uniform bead/seal. The contractor shall allow required cure time before movement or disturbance of joints to allow bond to form.

Root inhibiting drainage adhesive sealant should be Christy's® Root-Bar® Drain Pipe Adhesive, manufactured by T. Christy Enterprises, Anaheim, California, USA or approved equal.



KEEP ROOTS OUT

Water seeking roots will invade unprotected joints causing clogs and failure. Patent pending mineral additive causes roots to grow around joints.

SEAL CONNECTIONS

Prevent leakage of soil into pipes. Superior to duct tape.

PREVENT PULL-APART

Keeps joints together during assembly and backfilling of trenches.

HOW TO APPLY AND PROTECT A DRAINAGE SYSTEM

1. Apply to Socket. Coat liberally. Leave no gaps or voids.
2. Apply to Pipe. Coat liberally. Pay special attention to ridges where seal forms.
3. Push together and hold.
4. Verify no gaps in bead.

